

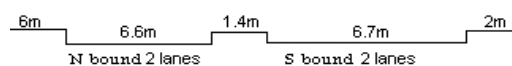
YEAR 2018

CORE STATION 5004

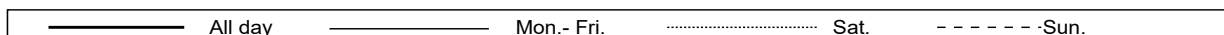
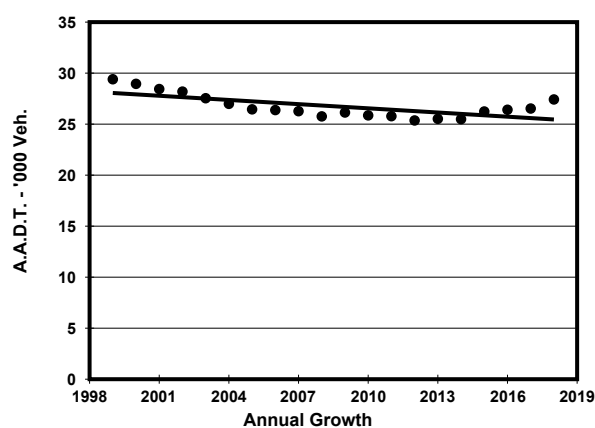
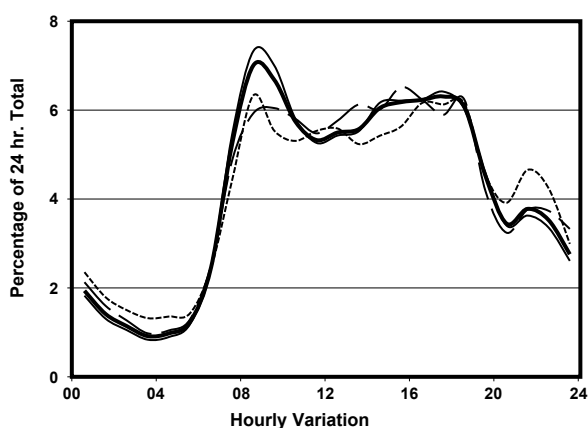
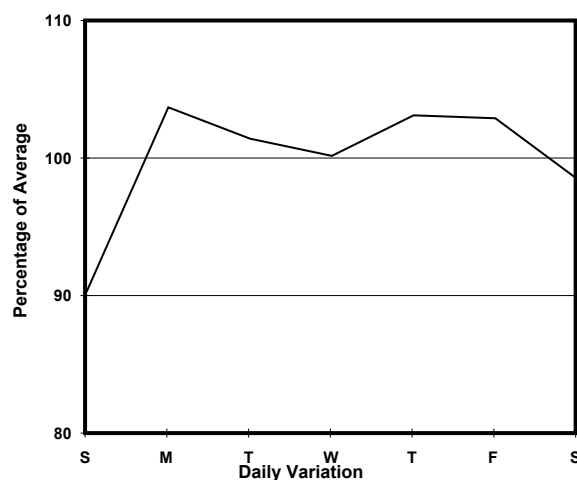
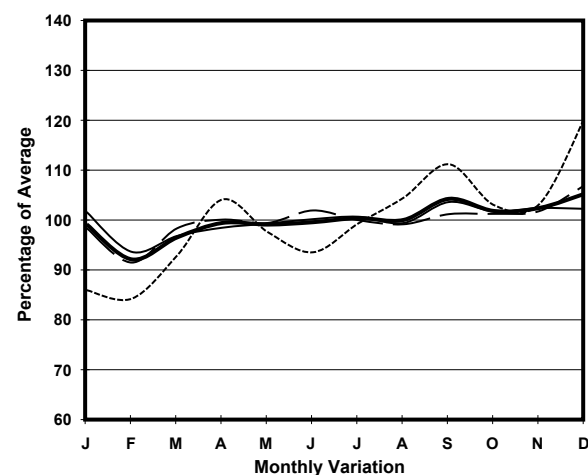
ROAD NETWORK MAJOR

ROAD TYPE PRIMARY DISTRIBUTOR

LINK CASTLE PEAK RD - KWAI CHUNG (from TAI WO INT to WO YI HOP RD)



## 1. TRAFFIC FLOW VARIATION AND GROWTH



## 2. TRAFFIC CHARACTERISTICS (BY DIRECTION)

Parameter	All - Day	Mon. - Fri.	Sat.	Sun.
<b>SOUTH BOUND</b>				
A.A.D.T.	12840	12670	13090	13960
R 12 / 24 - %	70.6	70.5	71.5	69.9
R 16 / 24 - %	86.8	86.7	87	87.1
AM Peak Hour	0800-0900	0800-0900	0800-0900	0800-0900
One-way flow at AM peak hour	930	910	890	1100
T - % (AM)	-	-	-	-
PM Peak Hour	1800-1900	1700-1800	1800-1900	1800-1900
One-way flow at PM peak hour	780	750	920	910
T - % (PM)	-	-	-	-
Prop.of commercial vehicles - 16 hr.	-	-	-	-
<b>NORTH BOUND</b>				
A.A.D.T.	14580	15490	14120	10940
R 12 / 24 - %	73.1	74.8	70.4	64.4
R 16 / 24 - %	87.5	88.7	84.8	81.9
AM Peak Hour	0900-1000	0800-0900	0900-1000	0900-1000
One-way flow at AM peak hour	1000	1150	910	530
T - % (AM)	-	-	-	-
PM Peak Hour	1600-1700	1700-1800	1600-1700	1600-1700
One-way flow at PM peak hour	990	1060	930	780
T - % (PM)	-	-	-	-
Prop.of commercial vehicles - 16 hr.	-	-	-	-

## 3. OTHER INFORMATION AND COMMENT